

InstantCheck **ECG Recorder**



Heart Rate (HR)
ST Segment (ST)
QRS Interval (QRS)

Real Time ECG

RHYTHM STRIP

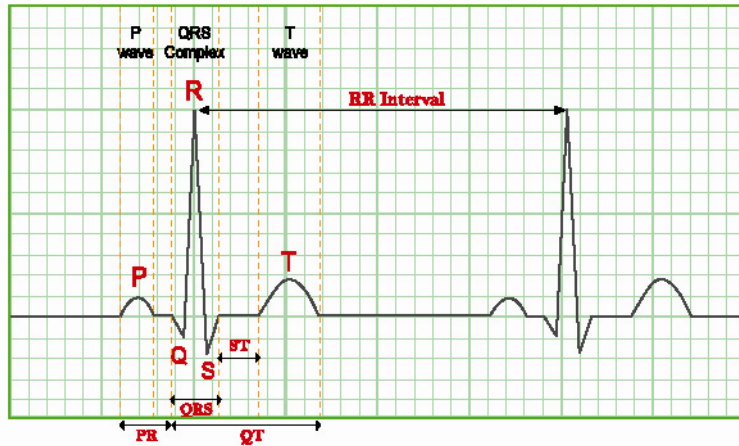


InstantCheck is a compact device that records and displays ECG waveforms in real time. You can monitor your heart anywhere, anytime.

Features:

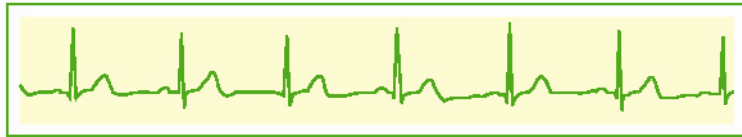
- Real time ECG
- 30 seconds rhythm strip
- Continuous measuring mode
- Large LCD panel
- External electrode cable
- Analysis and management software included

A Normal ECG Waveform



Some Examples

Normal Rhythm



Atrial Fibrillation



Premature Ventricular Contraction



Technical Specifications

Input Impedance	> 10M Ohm
Input dynamic range	+/-2 mV
Bandwidth	0.15 ~ 40 HZ
Common mode rejection ratio	> 95 dB
AD conversion	12 bits
Sampling frequency	250 samples/sec
Measurement time	30 seconds
Display	240 x 128 Dot-matrix LCD display
Input	Dry conduction electrodes and/or external auxiliary electrodes
Output	USB Interface port
Power supply	2 x 1.5V AAA
Size	124 x 78 x 22 mm
Weight	150 g (excluding batteries)
Environmental conditions:	
Storage temperature	-4°F ~ 122°F (-20°C ~ 50°C)
Operating temperature	50°F ~ 104°F (10°C ~ 40°C)
Humidity	25% ~ 95%
Measurement range:	
Average heart rate	45 ~ 180 bpm
ST segment	-3 ~ +3 mm
QRS Interval	<0.20 sec

Applications:

- Arrhythmia Control
- Off Hospital Monitoring
- Drug Evaluation
- Screening

Accessories:



Auxiliary Electrode Cable

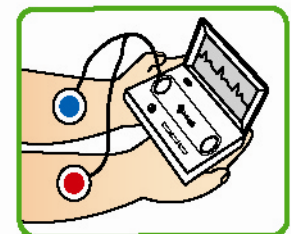


USB Cable

How to Use:



way1.
Dry Thumb Electrodes



way2.
Auxiliary Electrode Cable

